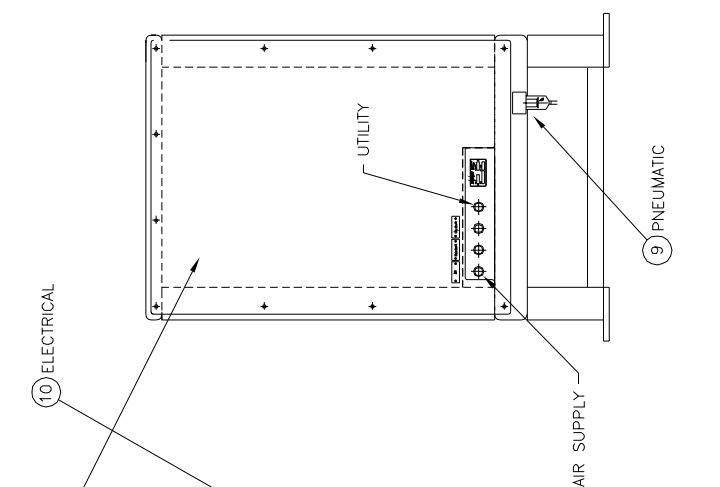
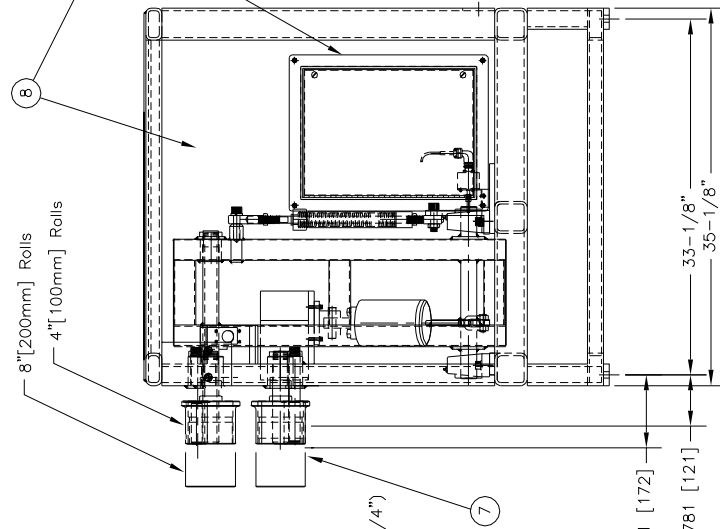
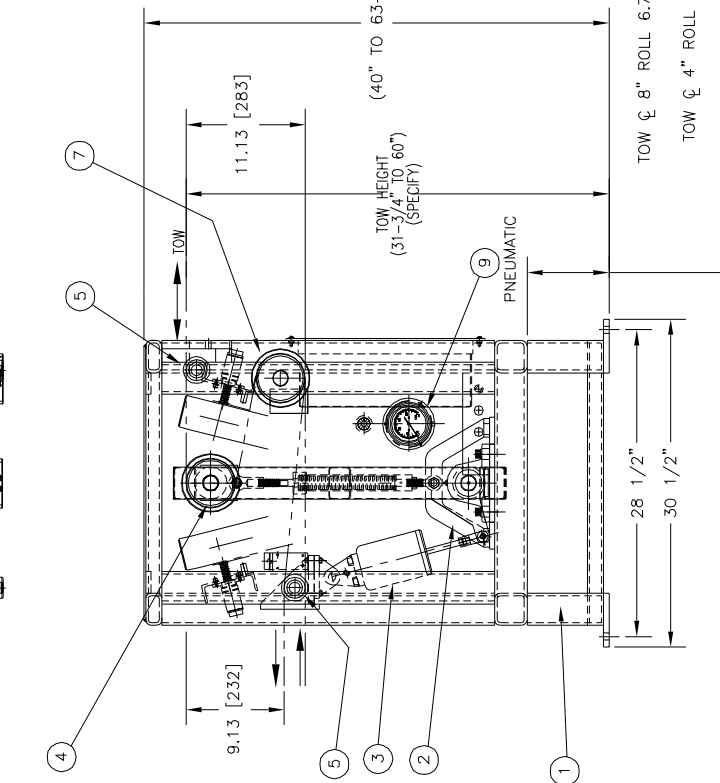
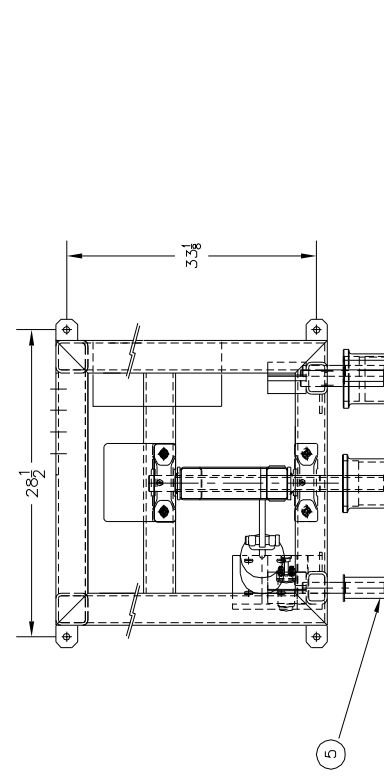


- NOTE:
- 1) TOW HEIGHT IS DETERMINED BY CHANGING BASE DIMENSION.
  - 2) DANCER IS AVAILABLE AS SHOWN AND OPPOSITE CONFIGURATIONS.
  - 3) ENTRANCE AND EXIT HEIGHT VARIES AS TOW DIRECTION CHANGES.
  - 4) TOW CENTER LINE ADJUSTS WITH 4" [100mm] ROLLS AND 8" [200mm] ROLLS.
  - 5) SWING ARM SHAFT MUST BE PARALLEL TO FIXED SHAFTS.
  - 6) LIMIT SWITCHES ADJUSTED TO ACT PRIOR TO SWING ARM CONTACTING HARD STOP.



NOTE: DIMENSION CHANGES AS TOW HEIGHT VARIES

DIMENSIONAL TOLERANCES (UNLESS OTHERWISE SPECIFIED)	DIMENSIONAL TOLERANCES (UNLESS OTHERWISE SPECIFIED)	
	DECIMALS	INCH
	.x	±.020
	.xx	±.010
	.xxx	±.005
	.xxx	±.001
	.xxx	±.005
	.xxx	±.001

UNITS	DIMENSIONAL TOLERANCES (UNLESS OTHERWISE SPECIFIED)	
	DECIMALS	MILLIMETER
	.x	±.020
	.xx	±.010
	.xxx	±.005
	.xxx	±.001
	.xxx	±.005
	.xxx	±.001

REV.	DATE	DESCRIPTION
1	10/08	ISSUE
2	11/08	REVISED

1. INTERPRET SYMBOLS PER ANSI Y14.3M-1982.
2. DEBURR & BREAK ALL SHARP EDGES & CORNERS ON SURFACE WITH SYMBOL: [MARK] IF APPLICABLE.
3. C'SINK ALL TAPPED HOLES 1-1/2 PITCH x 80°/80° BEFORE TAPPING.
4. DIMENSIONAL TOLERANCES APPLY AFTER PLATING.
5. FIT OR STAMP DRAWING NUMBER & REVISION LEVEL.
6. SURFACE FINISHES 125 UNLESS OTHERWISE NOTED.

**DM&E** CORPORATION  
 1000 W. 10TH ST.  
 NORTH CAROLINA

TITLE: ASM./SINGLE DANCER  
 DS20M

DRN: RRE  
 DATE: 3/96  
 SCALE: 1/8"=1"

CHEK: [ ]  
 HEAT TREAT/PLATING: [ ]  
 DRAWING NUMBER: 460-161-C  
 REV: 2