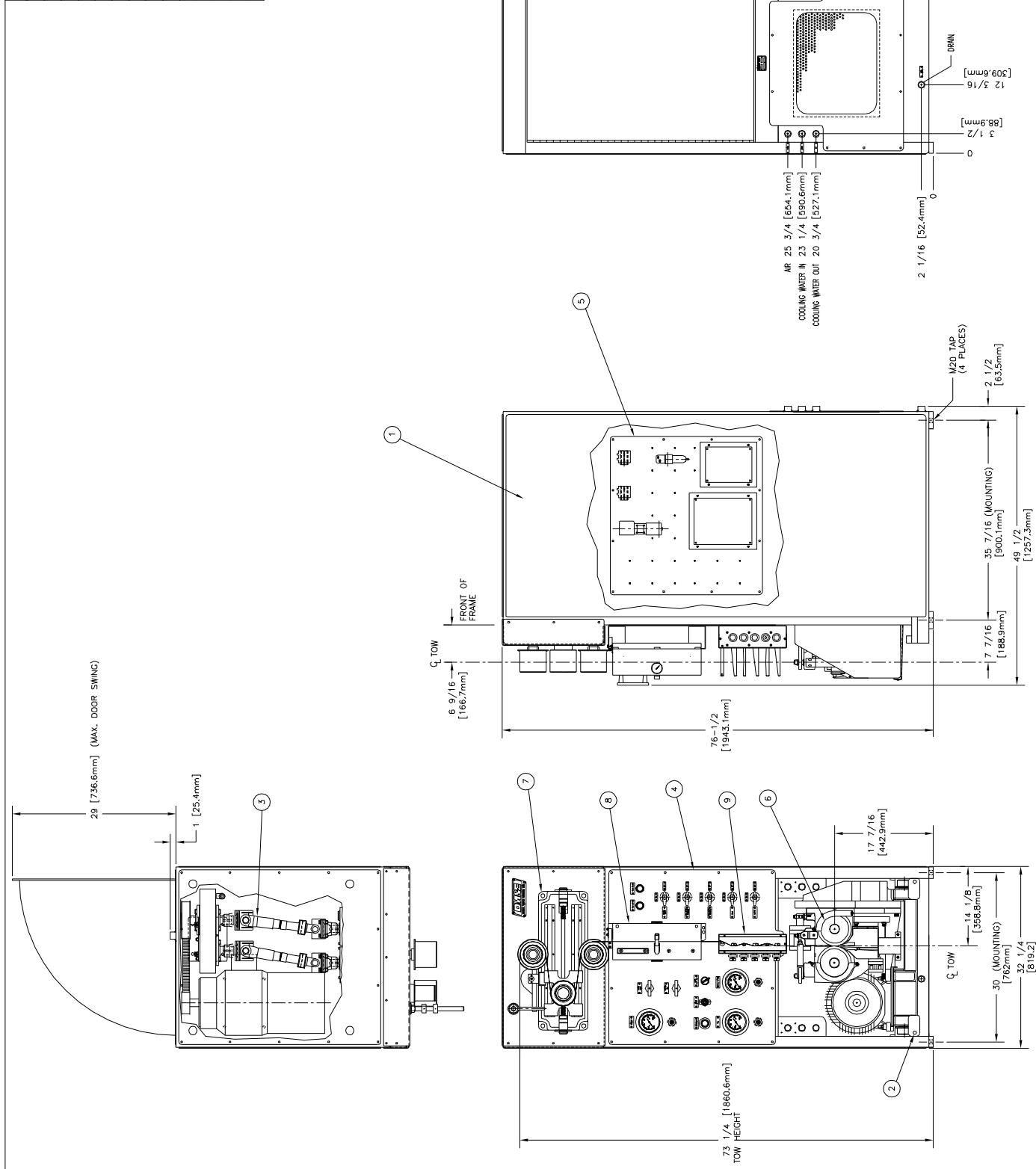


ITEM NO.	DESCRIPTION	QTY.	MATL.	REMARKS OR Dwg. No.
1	FRAME ASSEMBLY	1	-	D-440-079
2	SUB-FRAME ASSEMBLY	1	-	C-440-084
3	DRIVE ASSEMBLY	1	-	D-435-019
4	COVER ASSEMBLY	1	-	D-440-103
5	INTERNAL PANEL ASSEMBLY	1	-	D-420-029
6	CRIMPER HEAD ASSEMBLY	1	-	D-400-021
7	DANGER ASSEMBLY	1	-	D-461-009
8	STEAM CHEST ASSEMBLY	1	-	D-480-004
9	CONVERGENCE GUIDE ASSEMBLY	1	-	D-455-023
10	TOOL BOX ASSEMBLY	1	-	A-450-021
11	ELECTRICAL SCHEMATIC	1	-	D-420-025
12	PNEUMATIC SCHEMATIC	1	-	D-415-032
13	ROLL COOL SCHEMATIC	1	-	C-415-033
14	STEAM & DRAIN SCHEMATIC	1	-	C-415-035



NOTES:
 1. ITEMS 10, 11, 12, 13 AND 14 LISTED FOR REFERENCE ONLY. SEE DRAWING FOR DIMENSIONS.
 2. APPROX. WEIGHT - 2800 POUNDS

DRAWING NO.		DESCRIPTION
400-020-01-D	AS SHOWN	
400-020-02-D	OPPOSITE	

DM&E CORPORATION		SHELBY NORTH CAROLINA	
DATE	BY	DATE	BY
11/27	11/27		
REV.	NO.	REV.	NO.

ASSEMBLY, CRIMPER	
CLV-21	
DRAWING NUMBER	400-020-D
REV.	-